

DYWIDAG THREADBAR® Grade 100 Reinforcing Steel **NEW**



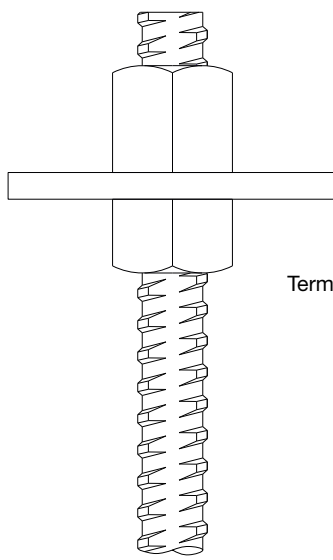
**Available now
for Mill Order!**

New Grade 100 DYWIDAG THREADBAR®

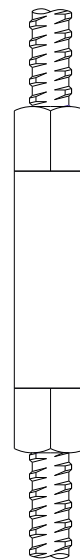
Thanks to significant R&D efforts, DYWIDAG THREADBAR® Grade 100 reinforcement is now available in sizes #6 through #20. It has a continuous rolled-in pattern of thread-like deformations along its entire length. More durable than machined threads, the deformations allow nuts and couplers to thread onto a DYWIDAG THREADBAR® at any point along its length. The deformation pattern complies with ASTM A615 with no compromise in bond strength. All mechanical properties meet or exceed A615 Grade 100 requirements. Accompanying hardware and anchorages are available, some as shown below.



Coupler



Terminator



Coupler with Nuts

Advantages of High-Strength THREADBAR® Reinforcement

- Fewer bars to handle
- Less congestion
- Lighter reinforcement assemblies
- Faster construction

Having to hoist, handle and place a lower volume of reinforcing steel makes installation simpler and faster. And, less congestion results in higher quality concrete placement with reduced

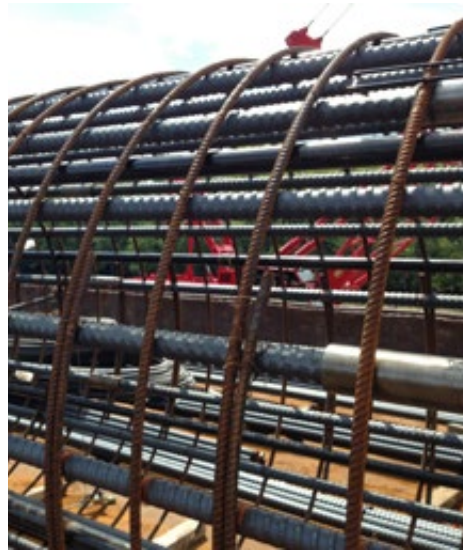
risk of consolidation issues. All these advantages result in a reduced volume of steel and shorter construction time leading to a lower overall cost of the reinforced concrete structure.

DYWIDAG THREADBAR® Reinforcing Steel ASTM A615 (Grade 100)

Reinforcing Steel Properties

THREADBAR® Designation	Maximum THREADBAR® Diameter			Minimum Yield Stress (f_y)		Nominal Cross Section Area (A_s)		Minimum Yield Load ($f_y \times A_s$)		Nominal Weight	
	[mm]	[in]	[mm]	[ksi]	[MPa]	[in ²]	[mm ²]	[kips]	[kN]	[lbs/ft]	[kg/m]
#6	19	0.86	22	100	690	0.44	284	44.0	196	1.50	2.23
#7	22	0.99	25	100	690	0.60	387	60.0	267	2.04	3.04
#8	25	1.12	28	100	690	0.79	510	79.0	351	2.67	3.97
#9	29	1.26	32	100	690	1.00	645	100.0	445	3.40	5.06
#10	32	1.43	36	100	690	1.27	819	127.0	565	4.30	6.40
#11	36	1.61	41	100	690	1.56	1,006	156.0	694	5.31	7.90
#14	43	1.86	47	100	690	2.25	1,452	225.0	1,001	7.65	11.38
#18	57	2.50	64	100	690	4.00	2,581	400.0	1,779	13.60	20.24
#20	63	2.72	69	100	690	4.91	3,168	491.0	2,184	16.70	24.85

Vertical Reinforcement



Contact

DYWIDAG-Systems International USA Inc.

NORTH CENTRAL
Bolingbrook, IL
Phone (630) 739-1100

SOUTH CENTRAL
Mansfield, TX
Phone (817) 473-6161

NORTH WEST
Kent, WA
Phone (253) 859-9995

WEST
Long Beach, CA
Phone (562) 531-6161

CENTRAL AMERICA
Pompano Beach, FL
Phone (954) 532-1326

SOUTH EAST
Tucker, GA
Phone (770) 491-3790

N. EAST / MID ATLANTIC
Toughkenamon, PA
Phone (610) 268-2221

ALASKA: Call North
West
HAWAII: Call West

DYWIDAG-Systems International Canada Ltd.

CANADA WEST
Surrey, BC
Phone (604) 888-8818

CANADA EAST
Gormley, ON
Phone (905) 888-8988